

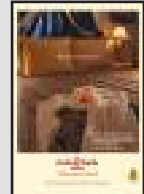
## ABTA & ASTA Supplements

### ABTA

#### Full Page

Bleed: 307 mm (h) x 220 mm (w)  
 Trim: 297 mm (h) x 210 mm (w)  
 Type: 261 mm (h) x 177 mm (w)

Sample



#### Double Page Spread

Bleed: 307 mm (h) x 430 mm (w)  
 Trim: 297 mm (h) x 420 mm (w)  
 Type: 261 mm (h) x 386 mm (w)



### ASTA

#### Full Page

Bleed: 286 mm (h) x 216 mm (w)  
 Trim: 276 mm (h) x 206 mm (w)  
 Type: 256 mm (h) x 184 mm (w)

Sample



#### Double Page Spread

Bleed: 286 mm (h) x 422 mm (w)  
 Trim: 276 mm (h) x 412 mm (w)  
 Type: 256 mm (h) x 366 mm (w)



### Format

The finished artwork should be supplied as a high resolution (300dpi) PDF. This is our preferred format. In special circumstances we can accept the files as high resolution jpeg or psd.



## ABTA & ASTA Supplements

### Colours

All artwork should be supplied in CMYK colours. If artwork is supplied in any other format (such as RGB) we can not be held responsible for the inaccurate reproduction on paper.

### Getting your artwork to us

If the file is under 10mb in size you may email the finished artwork to:

**[deanna.walker@worldtravelawards.com](mailto:deanna.walker@worldtravelawards.com)**

If the file is over 10mb it can be uploaded to:

**[www.worldtravelawards.com/dropbox](http://www.worldtravelawards.com/dropbox)**

Please email to confirm the file has been successfully received.